

Instruction for Use

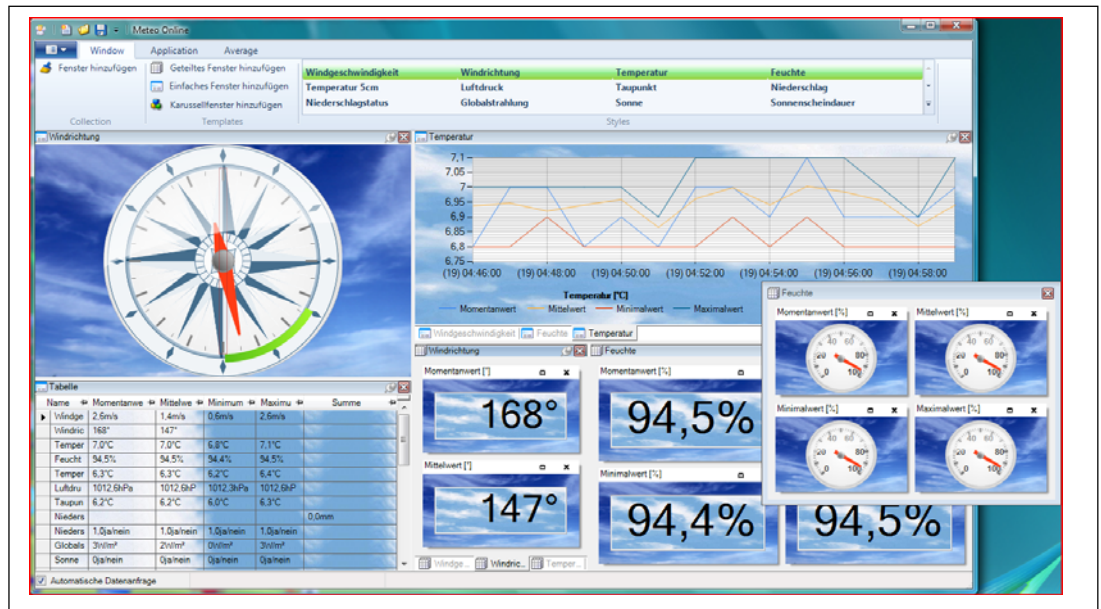
021706/07/12

Meteo- Online

Software

9.1700.98.001 / 201

Vers. 4.x



ADOLF THIES GmbH & Co. KG

Hauptstraße 76

Box 3536 + 3541

Phone ++551 79001-0

www.thiesclima.com

37083 Göttingen Germany

37025 Göttingen

Fax ++551 79001-65

info@thiesclima.com

Contents

| | | |
|---|-----------------------------------|---|
| 1 | Models | 2 |
| 2 | Program Function | 2 |
| 3 | Installation..... | 2 |
| 4 | Working with “Meteo-Online” | 3 |
| 5 | Status Information..... | 3 |
| 6 | Client-Server Concept..... | 3 |
| 7 | Client-Server Installation..... | 4 |

1 Models

| Description | Order- No. | Function |
|---------------|---------------|--|
| Meteo- Online | 9.1700.98.001 | Visualization and Documentation of meteorological measuring data |
| Meteo- Online | 9.1700.98.201 | Demo version with data monitor |

2 Program Function

Meteo- Online is a software which records, documents, and displays data from meteorological measuring instruments. The visualisation of the data is carried out in graphical form as diagram and/or text. The user has the possibility to place the display-elements free on the screen, and to store them. The operation of the program is context-sensitive, i.e. when pressing the right mouse-key while the cursor is on a window, menus are indicated, which allow specific settings. The main menu contains only a few elements which are necessary for a global control – among others, for example, the storing of a project.

Thanks to this method it was possible to make out a program easy to use. In addition to the control elements of the surface the program offers the possibility of documenting data in the files. **Meteo-Online** offers several options for starting and configuring the archives. It is possible to record hours as well as day's files with selectable averaging times.

3 Installation

For installation please put the CD into the CD-ROM-drive, and follow the instructions of installation. If the installation is not started automatically upon inserting the CD, please start in the explorer the program „SETUP.EXE” from your CD-ROM-drive. Please take care that an old version of **Meteo-Online** possibly existing on your PC, is de-installed first before a new version is installed!!

In the further course the data for **Meteo- Online** are installed on your computer. Upon the end of installation the data server is started automatically. A dialogue appears from which you have to select the connected instrument. Here, all instruments are listed with their order numbers. A further appearing dialogue queries the serial interface where the instrument is connected. Upon completed installation **Meteo- Online** is ready for operation.

4 Working with “Meteo- Online”

After installation you can start the program through the menu „Start“, „Programs“, THIES Clima, “**Meteo- Online**”. Upon starting, a dialogue appears where you can select the instrument which you selected with the installation (for example LED-display). Select the instrument, and enter „OK“.

If no instrument has been selected with the installation, please start the program „OWServer“ instead of „ **Meteo- Online** “. Here, please select your respective instrument. Close the program by „OK“ and then start „**Meteo- Online**“.

After starting „**Meteo- Online**“ (and selecting the instrument) the program displays a wind-rose, and several graphical components. The components indicated follow the selected instrument. Through the menu you can select the components to be visualised or not. Through the mouse you can change the size of each single window, or you can dock them to each others.

5 Status Information

The status line shows a black window which indicates error information. If no information is indicated in this window, your program works and indicates the data of the physical instrument. If this window indicates the text “No data from server...”, please check the settings in the server (see also **6 Client-Server Concept**). Please proceed as follows:

- Close the current document via the menu „File“, „Close“
- Select the program „OwServer“ (presentation as Icon beside the time of day in the system tray) and display the program.
- Check the indicated parameters of the serial interface, and change them – if necessary – through the switch “communication”.
- When the settings are correct , the measuring values are visualised in the dialogue table.
- After successful modification, close the dialogue by „OK“ and access in the main program to the configured data server via “File”, “New”.

6 Client-Server Concept

Meteo- Online is internally divided into two programs:

- Server
- Visualisation

These are two independent programs interchanging data. The server’s task is here to process the data from the connected instruments, to document them, and to hold them available for visualisation (client). The visualisation, on its part, queries cyclically the data from the server, and represents them in graphical form

This concept has the following advantages:

- The server is able to document data without visualisation.
- The server is able to administrate several terminals at the same time (limited only by the number of physical interfaces).
- Server and visualisation can run on different computers in a network
- Several visualisations can access simultaneously to one server.
- The server is started automatically on booting the PC, and documents the data in the background
- The visualisation is started only on request.
- The client-server connection can be used in the intranet as well as also in the internet.

A symbol in the system tray (down on the right screen-border) indicates that the server is being active. It shows a cloud with rain and a flash of lightning. If you run the mouse over this symbol a text appears „THIES Online Wind Server“. The right mouse-key makes a context-menu appearing where you can close the server, or make settings.

7 Client-Server Installation

Meteo-Online offers the possibility to install the data server (OwServer.EXE), and the display (MeteoOnline.EXE) on different processors. This paragraph explains the installation in a network. It can be left out in case all components of Meteo-Online are used on a PC. Before Meteo-Online can be installed in a network, first, the following conditions have to be complied with:

- The individual PCs are networked with Ethernet

Installation:

- Please install Meteo- Online on all PCs. The PC, to which the physical instruments are connected, is given in the following DATA SERVER. The PCs which display the data, are called CLIENTS in the following.

Configuration of the Data Server:

The data server needs no configuration. The Microsoft .NET Framework is used as basis of communication, an is defined in the pre-setting in a way that it has no limitation for Meteo- Online.

When using a firewall please make sure that the Port 1547 is not blocked.

Test of Configuration

For testing the DCOM- configuration please proceed as follows:

- Start Meteo Server on the server-PC
- Start Meteo- Online on the Client-PC
- Select “new file”, and enter the IP address of the pc, where the server was started, under “server IP address”. Select the key “renew”. Now, the configured instruments of the data server are displayed.

System Requirements

Supported Operating Systems:

Windows 7; Windows 7 Service Pack 1; Windows Server 2003 Service Pack 2; Windows Server 2008; Windows Server 2008 R2; Windows Server 2008 R2 SP1; Windows Vista Service Pack 1; Windows XP Service Pack 3

- Windows XP SP3
- Windows Server 2003 SP2
- Windows Vista SP1 or higher
- Windows Server 2008 (not supported under the server core role)
- Windows 7
- Windows Server 2008 R2 (not supported under the server core role)
- Windows 7 SP1
- Windows Server 2008 R2 SP1

Supported Architecture:

- x86
- x64
- ia64 (some functions are not supported under ia64, for ex. WPF)
- Hardware requirements:
- Recommended: at least Pentium 1 GHz or faster with at least 1 GB RAM

Minimum Hard Disc Storage Unit:

- x86 – 850 MB
- x64 – 2 GB
- Requirements:
- Windows Installer 3.1 or higher
- Internet Explorer 5.01 or higher



ADOLF THIES GmbH & Co. KG

Hauptstraße 76 37083 Göttingen Germany
P.O. Box 3536 + 3541 37025 Göttingen
Phone ++551 79001-0 Fax ++551 79001-65
www.thiesclima.com info@thiesclima.com



- Alterations reserved-